



MarineTraffic

COMAR SLR-200N AIS RECEIVER

1. Hardware installation:

The receiver must be connected to the Antenna, Ethernet network and Power. The device may come without a power adaptor. You can use any generic power adaptor that outputs 12 – 24V DC. Pay attention to the correct polarity when connecting the cables (positive is red, negative is black). A PC is required to be present at the same Local Area Network, only during the configuration of the receiver.

2. Automatically assigned IP address of the Receiver:

The receiver is pre-configured to use the DHCP protocol for automatic assignment of an IP address. Most local networks support the DHCP protocol and the receiver should automatically obtain a local IP address once it is connected to an Ethernet port on your switch or router.

3. Install the DeviceInstaller program:

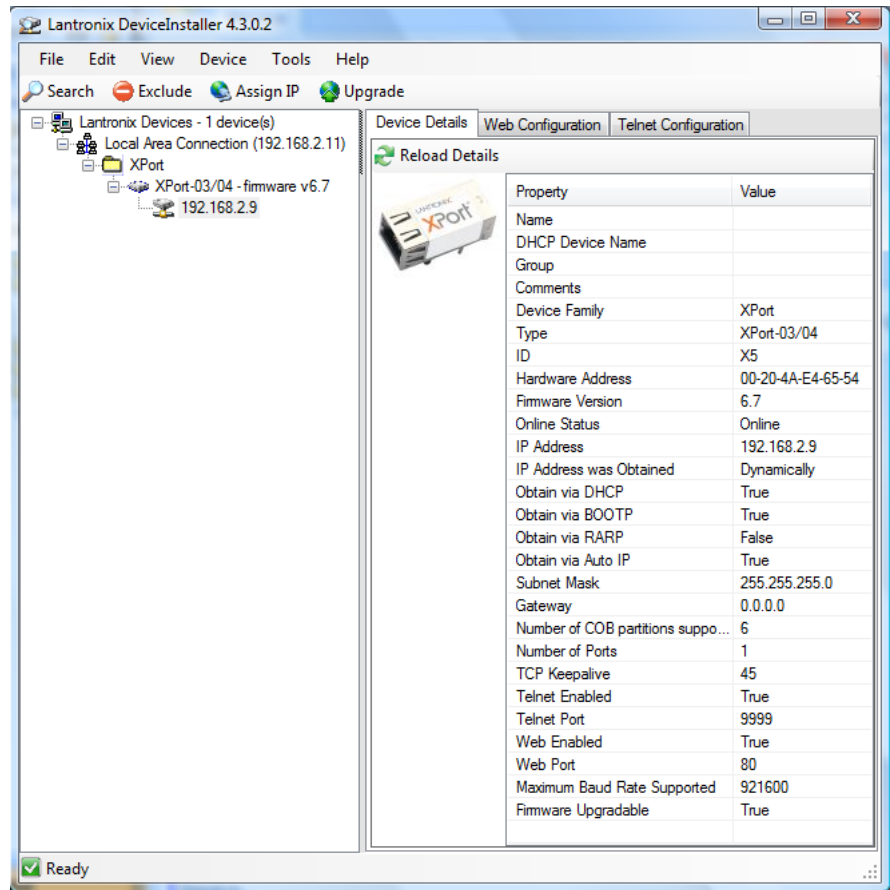
The receiver has an embedded Lantronix XPort Ethernet interface. In order to access the configuration of this device, you need to download and install the latest version of **DeviceInstaller** from here:

http://ltxfq.custhelp.com/app/answers/detail/a_id/644

4. Run the DeviceInstaller program:

Start the program at **Start** -> **All Programs** -> **Lantronix** -> **DeviceInstaller**. Make sure that the PC you are using is connected to the same Local Area Network (with cables – not WiFi) where the receiver is also connected to. You may also connect the receiver directly to your PC using an Ethernet cable (cross cable if necessary). Click on the **Search** button.

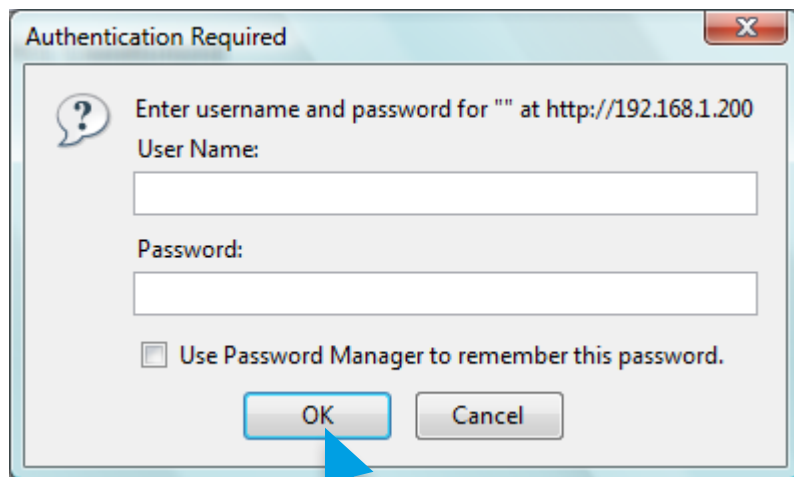
The DeviceInstaller should find the receiver and display its IP address at the left, under **Local Area Connection** -> **XPort**, as shown on the picture below:



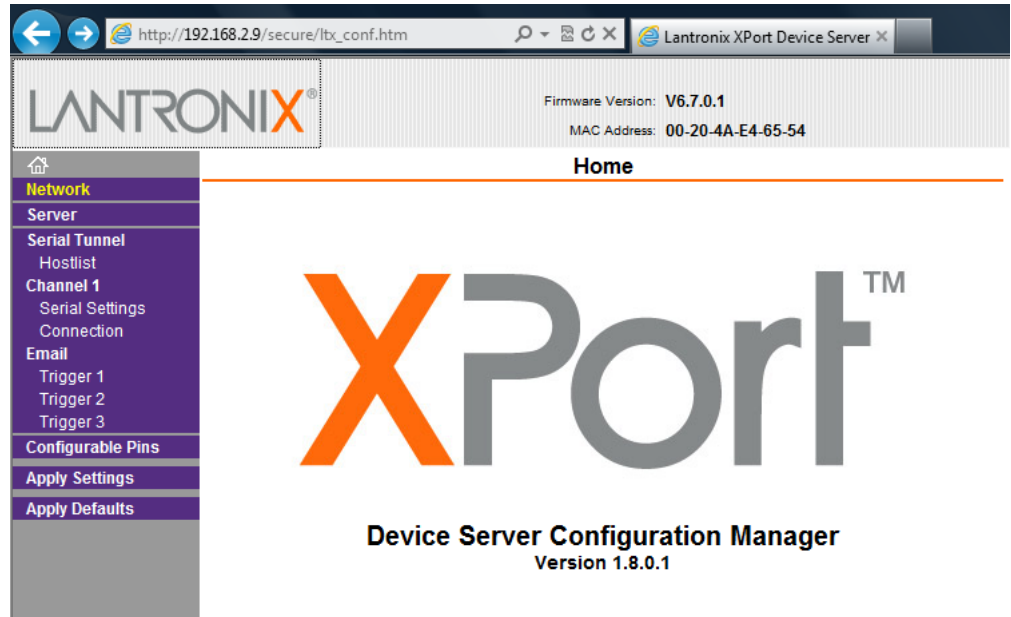
5. Access the configuration of the receiver:

The configuration of the receiver is now accessible either through DeviceInstaller by selecting the **Web Configuration** tab from the right section of the program, or through a web browser (Internet Explorer is preferred) by entering the IP address of the receiver (e.g. <http://192.168.2.9> in the above example)

5. You will be prompted to enter a username and a password. Default Username and Password are **blank** (just click **OK** - do not type anything)

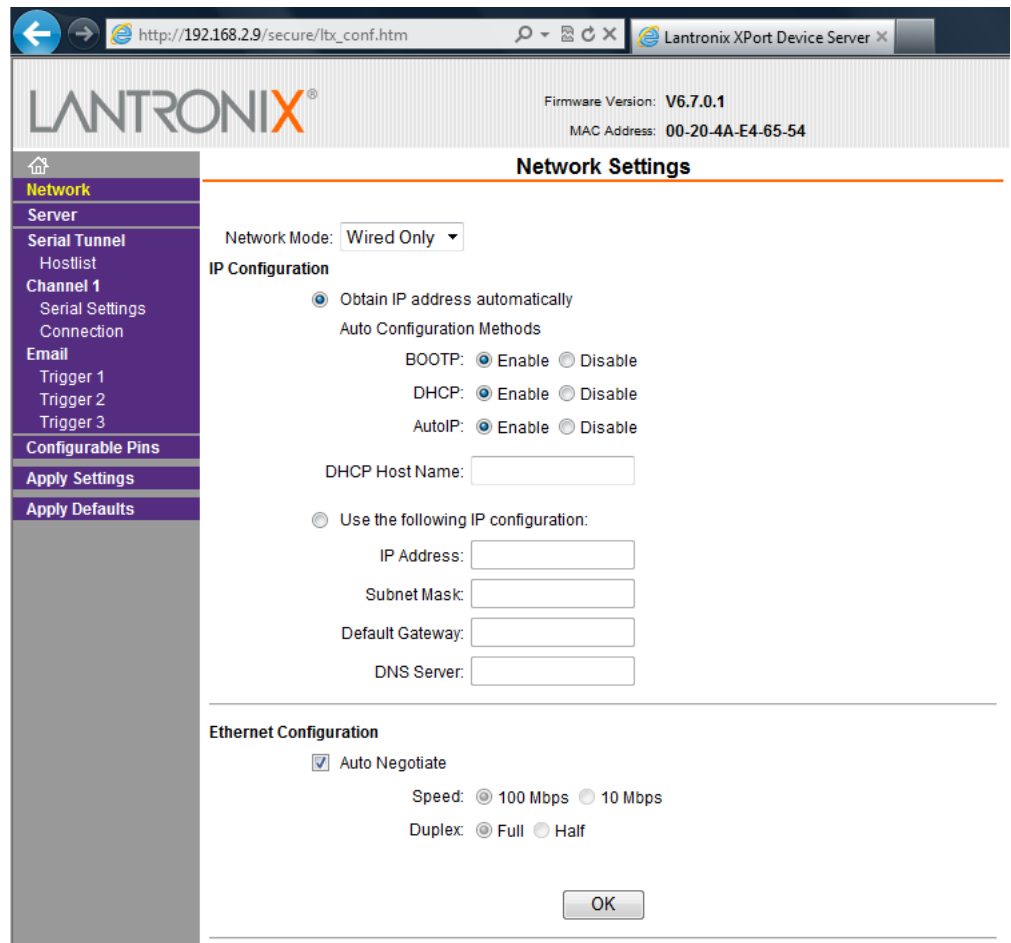


7. The homepage of the configuration interface will be displayed:



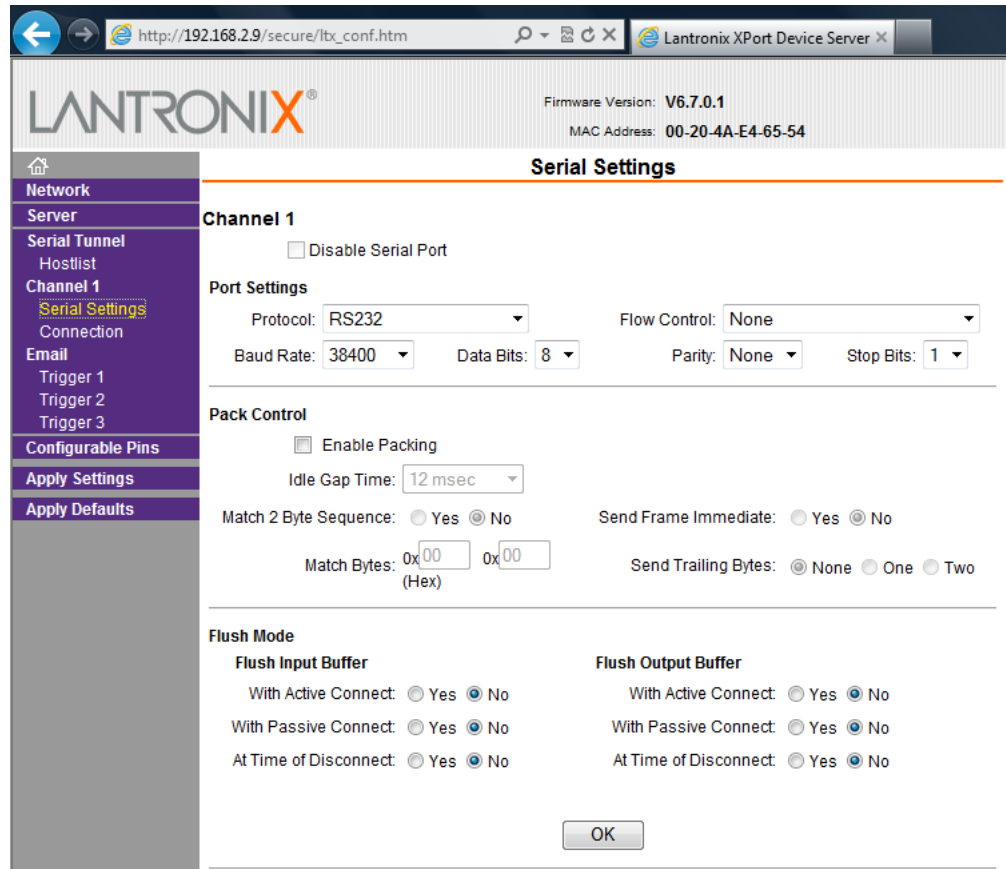
8. **Receiver's Network setup:**

Click on the **Network** tab and select either the automatic IP (DHCP) or give a static IP address, subnet mask and default gateway according to your local network setup. If your network supports DHCP, it is preferable to leave the **Obtain IP address automatically** setting selected.



9. Internal Serial port settings:

Select **Channel 1**--> **Serial Settings** and confirm the following settings:



The screenshot shows the 'Serial Settings' page for 'Channel 1' on a Lantronix XPort Device Server. The interface includes a navigation menu on the left and a main configuration area. The settings are as follows:

- Channel 1**
 - Disable Serial Port
- Port Settings**
 - Protocol: RS232
 - Flow Control: None
 - Baud Rate: 38400
 - Data Bits: 8
 - Parity: None
 - Stop Bits: 1
- Pack Control**
 - Enable Packing
 - Idle Gap Time: 12 msec
 - Match 2 Byte Sequence: Yes No
 - Send Frame Immediate: Yes No
 - Match Bytes: 0x00 0x00 (Hex)
 - Send Trailing Bytes: None One Two
- Flush Mode**
 - Flush Input Buffer**
 - With Active Connect: Yes No
 - With Passive Connect: Yes No
 - At Time of Disconnect: Yes No
 - Flush Output Buffer**
 - With Active Connect: Yes No
 - With Passive Connect: Yes No
 - At Time of Disconnect: Yes No

An 'OK' button is located at the bottom right of the configuration area.

10. Prepare a TCP data feed to MarineTraffic:

Select **Channel 1** ---> **Connection** and enter the following values (attention to **Active Connect = With Any Character**). The value for local and remote port shown here is the default value (5321).




IMPORTANT

If you haven't done this already, please visit the MarineTraffic website (<http://www.marinetraffic.com>) and register yourself by creating a New Account.

Upon registration, sign-in to your account (top right corner) and click on My Account > My Stations > Add Receiving Station to add your Station to the MarineTraffic Network.

This way, you will get a new Station ID and a unique Port Number to send your data to.

Enter your assigned port to the **Remote Port** field.



Firmware Version: V6.8.0.2
 MAC Address: 00-20-4A-B0-74-27

- Network
- Server
- Serial Tunnel
- Hostlist
- Channel 1
- Serial Settings
- Connection
- Email
- Trigger 1
- Trigger 2
- Trigger 3
- Configurable Pins
- Apply Settings
- Apply Defaults

Connection Settings

Channel 1

Connect Protocol
Protocol: TCP

Connect Mode

Passive Connection:

Accept Incoming: No

Password Required: Yes No

Password:

Modem Escape Sequence Pass Through: Yes No

Active Connection:

Active Connect: With Any Character

Start Character: 0x0D (in Hex)

Modem Mode: None

Show IP Address After RING: Yes No

Endpoint Configuration:

Local Port: 10001 Auto increment for active connect

Remote Port: 5321 Remote Host: 5.9.207.224

Common Options:

Telnet Com Port Cntrl: Disable Connect Response: None

Terminal Name: Use Hostlist: Yes No LED: Blink

Disconnect Mode

On Mdm_Ctrl_In Drop: Yes No Hard Disconnect: Yes No


Check EOT(Ctrl-D): Yes No Inactivity Timeout: 0 : 0 (mins : secs)

OK

11. Alternative configuration using UDP data stream:

This step should be normally omitted as it is an alternative mode of sending the data feed as described at Step 9.

In UDP mode, some data loss may occur. A small data loss is acceptable for data streams such as AIS, but if you observe that less targets than expected are displayed on the MarineTraffic Live Map, try the TCP configuration as described in the previous step.



Firmware Version: V6.8.0.2
 MAC Address: 00-20-4A-B0-74-27

- Network
- Server
- Serial Tunnel
- Hostlist
- Channel 1
- Serial Settings
- Connection
- Email
- Trigger 1
- Trigger 2
- Trigger 3
- Configurable Pins
- Apply Settings
- Apply Defaults

Connection Settings

Channel 1

Connect Protocol
Protocol: UDP

Datagram Mode:

Datagram Type: 01 Accept Incoming: No

Endpoint Configuration:

Local Port: 10001 Remote Port: 5321


Remote Host: 5.9.207.224 Use Broadcast

Device Address Table:

No.	Dev Addr	No.	Dev Addr	No.	Dev Addr	No.	Dev Addr
0	<input type="text"/>	1	<input type="text"/>	2	<input type="text"/>	3	<input type="text"/>
4	<input type="text"/>	5	<input type="text"/>	6	<input type="text"/>	7	<input type="text"/>
8	<input type="text"/>	9	<input type="text"/>	10	<input type="text"/>	11	<input type="text"/>
12	<input type="text"/>	13	<input type="text"/>	14	<input type="text"/>	15	<input type="text"/>

OK

12. Scroll down, press **OK** and then click on the **Apply Settings** option from the left menu.
The receiver is now rebooting. Then, it will be ready to start sending AIS data to the MarineTraffic central server.
13. Finally, visit your station's Details page and make sure your station status is **ONLINE** (it may take a few minutes for that to happen):

Current Status & Statistics	
Status	ONLINE 
Availability	100% (2159 hours online / 2161 total hours)
Reception distance in nautical miles	Average: 9.2 / Max: 32.9
Records received in 1 hour	Distinct Vessels: 219 / Positions: 1962
Area Covered	3321 km ²

That's it!

You are now sharing your data with us.

We sincerely appreciate your contribution to our site and your help to expand our services and coverage.

