



# MarineTraffic

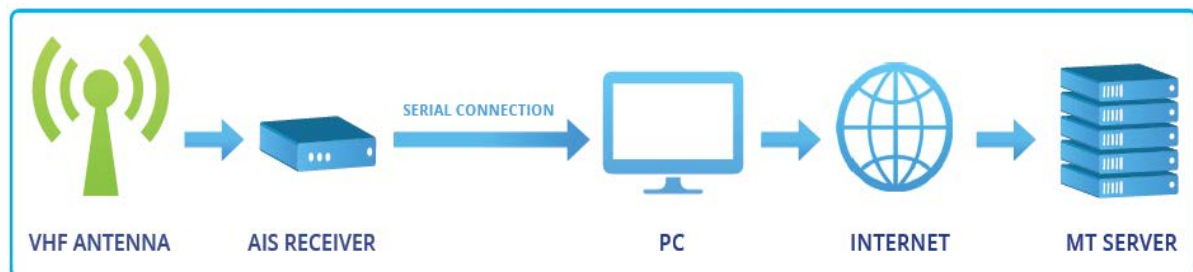
## NMEA ROUTER

### HOW TO SET-UP FOR USE WITH AN AIS RECEIVER WITH SERIAL OUTPUT AND SHARE DATA WITH **MARINETRAFFIC**

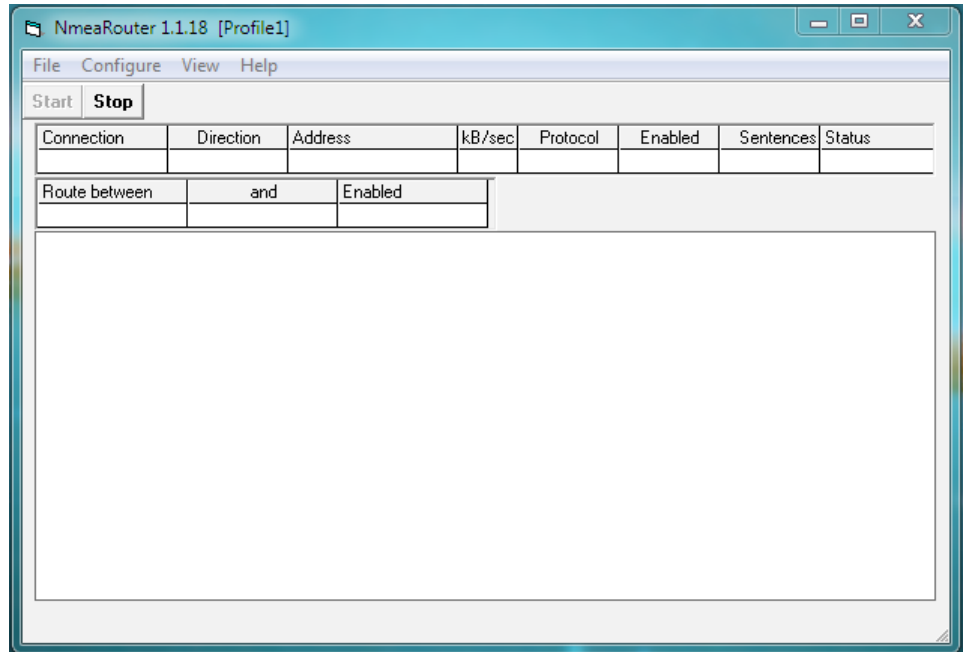
If you own an AIS receiver with a serial data output and you wish to share your data with **MarineTraffic**, you will need an AIS data forwarding utility such as NMEA Router. You will also need a dedicated PC with RS232 and ethernet ports, XP or newer OS and a stable internet connection.

- The first step is to connect your Receiver to your PC using a standard serial cable. Make sure your COM port is configured as 38400,8,N,1 no flow control and your PC has access to the internet.

**Your equipment should be set-up as shown below:**



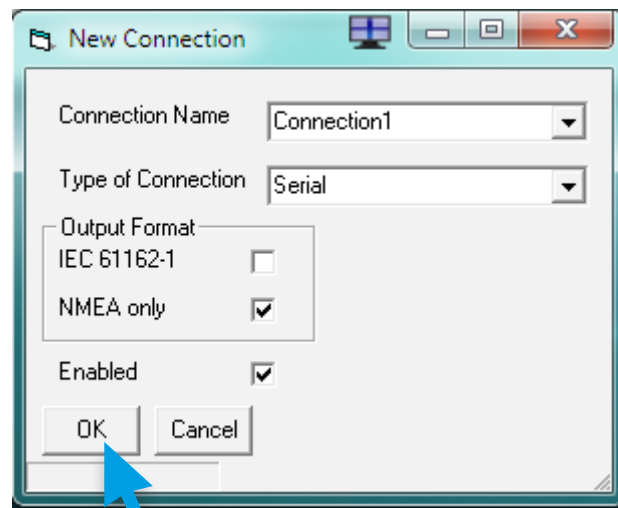
- Next, download **NMEA Router** from here:  
[http://www.marinetraffic.com/files/NmeaRouter\\_setup\\_1.1.58.exe](http://www.marinetraffic.com/files/NmeaRouter_setup_1.1.58.exe)
- Double-click on the file you have just downloaded and run the installer. Once the installation is over, a new folder (named **NMEA Router**) will be created in your **Start--> Applications program group**.
- Open that folder and double-click on the **NMEA Router** icon.
- The application will start and you should see the main window:



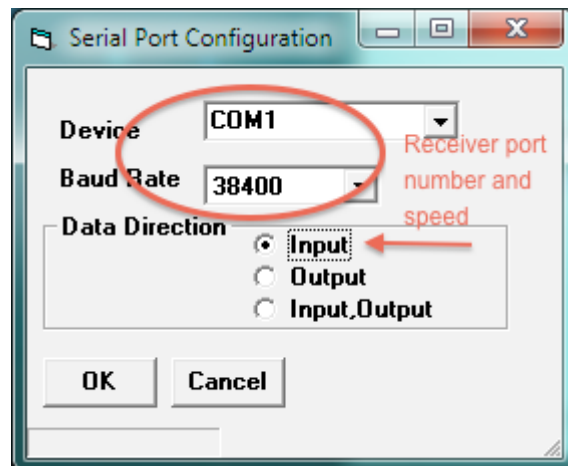
- Next, click on **Configure** --> **Profile** --> **New** to create a new application profile. The following window will be displayed:



- Name it as you please and click **OK**. A **New Connection** window will appear :



- Make the changes as displayed above and click **OK**. You will now see the serial port settings window :



- Select the **COM** port your receiver is connected to, the standard AIS NMEA serial data speed (38400) and set the **Data Direction** to **Input**. When finished, click **OK**. You will return to the application's main window.



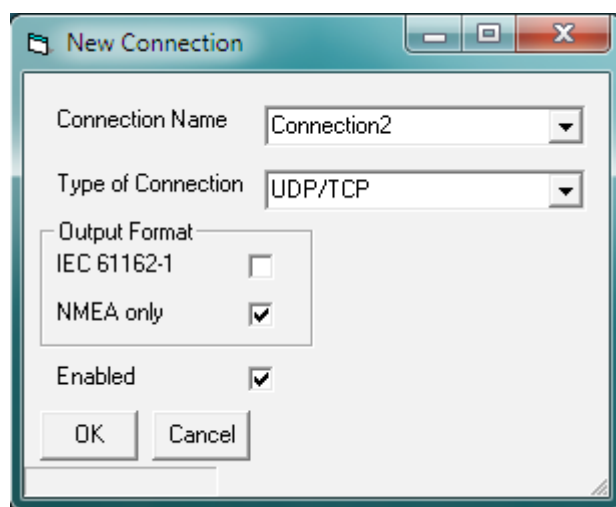
IMPORTANT

If you haven't done this already, please visit the MarineTraffic website (<http://www.marinetraffic.com>) and register yourself by creating a New Account.

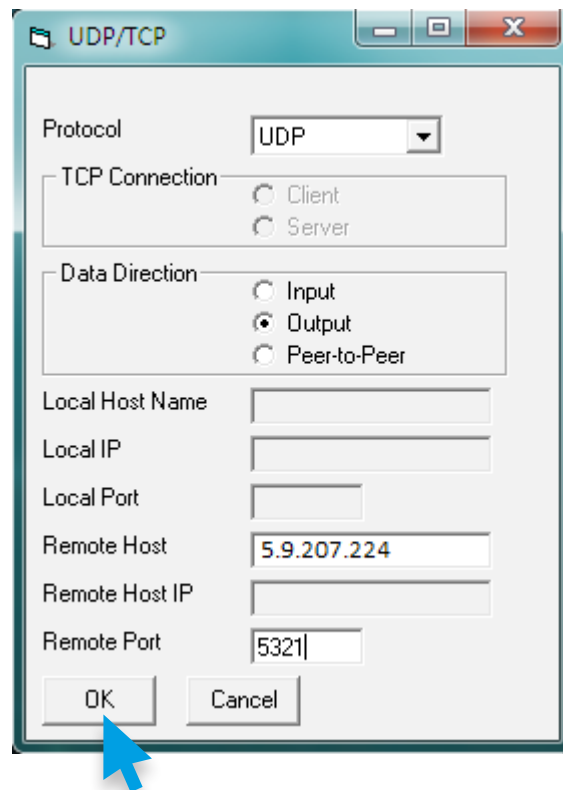
Upon registration, sign-in to your account (top right corner) and click on My Account > My Stations > Add Receiving Station to add your Station to the MarineTraffic Network.

This way, you will get a new Station ID and a unique Port Number to send data to.

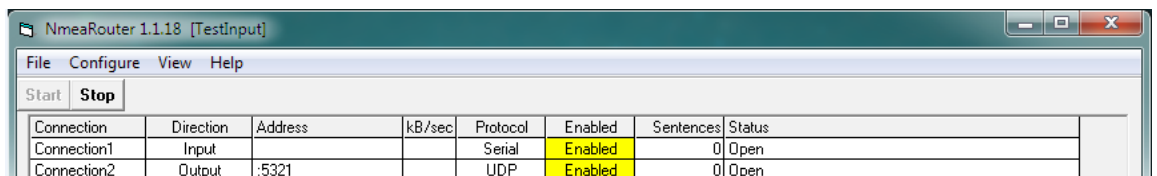
- Next go to **Configure** --> **Connection** --> **New** :



- Make the changes as displayed above and click **OK**. You will now get to the **UDP/TCP** settings window :

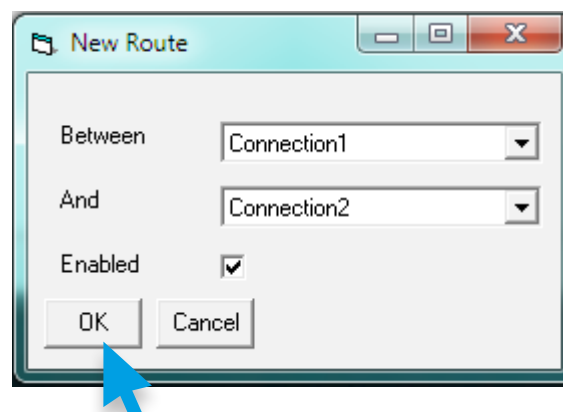


- Set-up as displayed above and enter your unique port number on the **Remote Port** field. When you are finished, click **OK**. You should now see both connections present on the application's main window :

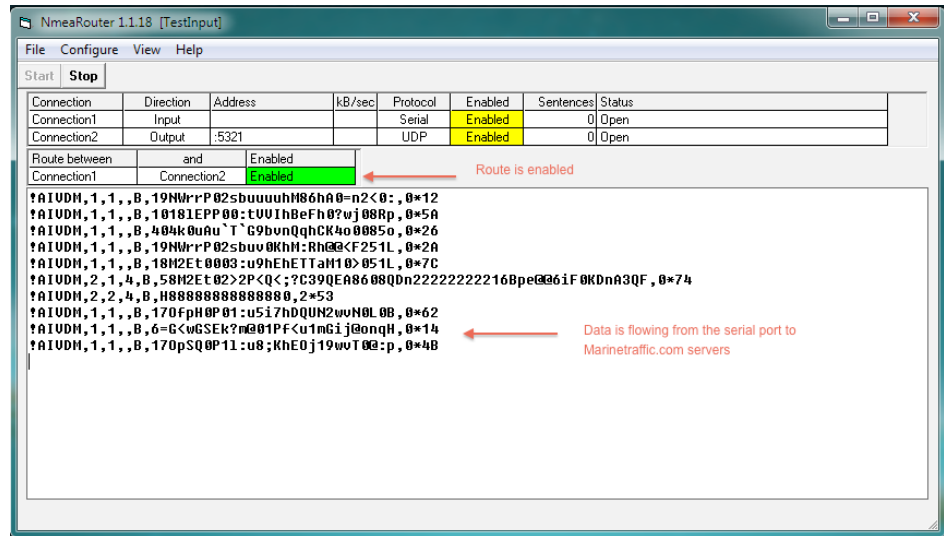


Connection	Direction	Address	kB/sec	Protocol	Enabled	Sentences	Status
Connection1	Input			Serial	Enabled	0	Open
Connection2	Output	:5321		UDP	Enabled	0	Open

- The only thing left in order to forward serial data to the **Marinetraffic** servers, is to tie the two connections together. Click on **Configure** --> **Route** --> **New**. You will see the following window :




- Make the selections as shown above and click **OK**. You will return to the main application's window where you should see this :



- Go to **Configure** --> **Profile** --> **Save** to save your profile preferences.
- Finally visit your station's statistics page and make sure your station status is **ONLINE** (it may take a few minutes for that to happen):

**Current Status & Statistics**

Status	<b>ONLINE</b> 
Availability	100% (2159 hours online / 2161 total hours)
Reception distance in nautical miles	Average: 9.2 / Max: 32.9
Records received in 1 hour	Distinct Vessels: 219 / Positions: 1962
Area Covered	3321 km <sup>2</sup>

**That's it!**

**You are now sharing your data with us.**

We sincerely appreciate your contribution to our site and your help to expand our services and coverage.

